

# Wymeswold C. of E. Primary School Newsletter

Friday 7th October 2011



*This academic year we will aim to produce a newsletter on the first Friday of each month.*

We are back in the swing of a busy Autumn Term.

Unseasonable weather these last two weeks have made playing outside a sheer pleasure! The youngest children have been making the most of outdoors in their enclosed EYFS play area - digging, painting, writing, hanging out the washing and building.

## Football

The weather has made many things even more pleasurable - our girls had a wonderful time at the Link 77 girl's football tournament where despite never playing in a match situation before we came second in our league and fourth overall in the tournament! Well done to all of you - it was a wonderful afternoon.

Likewise, our boy's team have had a cracking start to the Link 77 tournament at Rawlins. They beat Burton 6-0, lost 3-1 to Highgate (the best team in the tournament according to the boys) and are due to play the next leg this week. We wish them well and send them all our love and encouragement.



## FORTHCOMING EVENTS

Thurs 6th Oct  
&  
Thurs 13th Oct

Link 77 Football  
Rawlins  
3.30pm

Half-term  
School Closed  
Friday 14th October  
To  
Friday 21st October

Tue 25th Oct

Parents Evening  
3.30 pm-5.30pm

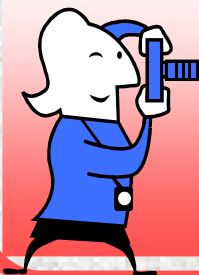
Wed 26th Oct

Parents Evening  
3.30 pm-7.30pm

## Shoebbox appeal

It's the time of year where we begin the journey up to Christmas. It's always a magical term, with many interesting and exciting events such as Halloween and Bonfire Night, frosty mornings, It is also a time to think about others in the world that don't experience the great and wonderful things that we take for granted - so once again we will be asking friends and families of the school to participate in the Samaritan's Purse Shoebbox Appeal.

Letters will be going out to families asking to prepare a shoebbox of little presents for a child in another part of the world. You can choose the age group and the gender of the child you would like to create your shoebbox for and there are also guidelines about the nature of the gifts you need to put inside.



### To All New Class 1 Parents

On Thursday, 10<sup>th</sup> November the Loughborough Echo will be coming in to school to photograph our new Class 1 children for the special souvenir supplement featuring all new reception classes throughout their circulation area. Permission letters have gone out – if you have not completed and signed this letter please return to school as soon as possible.

The supplement will appear in the Loughborough Echo on Friday, 25<sup>th</sup> November 2011.

### WW2 topic

Fantastic response from families - children have come in to school with amazing stories from their own relatives because the topic has encouraged conversations and research. Medals, paperwork even live discussions from senior members of our community who witnessed the events of 1939-45.



### Music lessons



Don't forget - there may still be some spaces with our music teachers if you wish your child to have lessons.

We do still have some school violins for those who wish to have lessons.

Keyboard is proving as popular as ever - please see Mrs Evans if you wish to enrol your child for lessons. Our children do very well with their music and we see this stage as the beginning of their lifelong journey, loving music and enjoying playing music for pleasure, or who

### Nut Free School

We need to remind all parents that we are choosing to remain a 'Nut Free School'. This is for the safety and wellbeing of all our children as there may potentially be allergies that develop causing risk to life.

Please can all parents ensure lunchboxes do not contain peanut butter sandwiches or nutty cereal bars.

If you are (kindly) making a cake for cake raffle day, please list the ingredients so the parents of the child who wins the cake can make a judgement before consuming as to whether it would be suitable for their child to eat.

Thank you for helping us with this issue – it is important that we keep the safety of all our children as paramount.



### School Uniform Order

A reminder if you wish to order fleeces, minstrel jackets or PE bags you order needs to be returned to the school by Monday 10<sup>th</sup> October

## Nestle Top Boxes

The school is still collecting the tokens from the tops of Nestle cereal boxes. These little tokens are exchanged to provide the school with new books to supplement the curriculum and keep our stocks up to date and in good condition. Please look out for these very valuable tokens and can you bring them in and put them in the special box located in the foyer.

Thanks for your help with our collecting!



## Botanic Gardens

The class 1, 2 and 3 trip to Leicester Botanical Gardens was bathed in sunshine on both days and the children found minibeasts galore as well as learning about habitats and environments.

Thanks to the KS1 staff for organising such a lovely day for our children.



## Volunteer leaflet

We are very mindful of safeguarding our children and staff here at Wymeswold Primary School. The Governing Body and I have produced a leaflet for volunteer helpers, giving some guidance about expectations and conduct while working here with children on a voluntary basis that we believe will protect both the volunteer and the children they are working with.

From now on if you are working in school on an occasional voluntary basis and therefore you have not been CRB checked, the staff member of the class you are working in will give you a small information pack to help you understand the safeguarding needs of the setting. Please take time to read this important information as it is to the benefit of all of us - including you!

## E-safety Parent Awareness Session

- How well do you know your child's online friends?
- How familiar are you with the language of MSN Internet Messaging?
- What are the hidden dangers of online gaming site?
- Do you know how to effectively keep your child safe when he/she is online?



We invite you to a session taken by Simon Genders, Safeguarding Development Officer for Leicestershire Children and Young People's Service on **1st November, 3.30-4.30pm** here in the school hall.

The session is free and if you wish to attend please complete the letter sent out or let the office know by October 14th.

***There will be crèche facilities for children and their younger siblings.***

# Green Team Update

We have been planting bulbs in the flower bed by the picnic tables and near the car park please do not jump on them.

Now we are litter picking in the playground so please don't drop litter over the fence because it is still our land . Please tell your children to put litter in the bins at playtime because we are trying to make our school a tidier place and also tell them that if they do put litter in the bin they will get a recycling champion sticker.

Article written by Luke Nevinson, Alexander Hayward & Annabel Straw



## Reminder

Can we please remind you that children are expected to arrive at school between 8.50 and 9.00am.

If you arrive at school after 9.00am, please go through reception area where you will need to fill in the 'late book'.

# Photo Gallery



## EYFS Play



## Botanic Garden Visit

